



**WORLD'S BEST  
ALLOY BULLBARS**

**East Coast Bullbars (ECB Pty Ltd)**

Tel: 07 3897 5700

Fax: 07 3283 1168

ecb@ecb.com.au www.ecb.com.au

29 Snook St  
Clontarf QLD 4019  
Australia

Po Box 122  
Margate QLD 4019  
Australia

**EAN62SY**

REPLACES: 09.02.10

REVISED: 28.06.10

## **FITTING INSTRUCTIONS**

### **NISSAN PATHFINDER R51 07/05on ST-L & Ti MODELS & NAVARA D40 12/05- ARC™ PROTECTION BAR VEHICLE FRONTAL PROTECTION SYSTEM (VFPS) FOR AIR BAG & ADR COMPLIANT VEHICLES**

Check installation hardware before commencing.

1. Carefully cut around templates (supplied) for bumper trim using scissors. **See figure 1** for placement. **CAUTION:** Measure template to ensure correct size, some printers may vary.
2. Remove lower plastic trim from bumper cover. Six 10mm head bolts.
3. To avoid damage to vehicle when cutting, use masking tape to cover area where template is placed on vehicle. Place template onto vehicle and mark cut line. **Caution:** Ensure markings on template match area on bumper.
4. Remove inner guard from edge of plastic bumper skin. Two PK screws (two 10mm head bolts on extra cab) from under side of bumper and one pk screw on front edge of wheel arch.
5. Using a jigsaw or similar, cut area previously marked using template. Cut centre of bar on crease line of bumper using a strong sharp knife. **See figure 2 and 3**
6. Remove lower half of plastic bumper cover. Four 10mm head bolts on underside of bumper. **Extra cab only:** Three plastic screw clips in bumper grille area.
7. Disassemble engine shield, two 10mm head bolts on Engine shield; loosen rear 10mm head bolts and allow too hang down.
8. Remove bumper support; remove two 17mm head bolts (per side).
9. Remove tow hook from passenger's side of vehicle, two 17mm head bolts.
10. Grind lip off lower chassis, so steel mounting brackets will sit flat. **See figures 4 and 5.** Blow filings clear and treat all exposed metal with a rust inhibitor.
11. Install ECB steel mounting brackets onto vehicle. Four M12 x 40mm bolts, spring washers, flat washers and two 6mm square washers (supplied) (per side). **See figure 6** for placement of Square washers, for bolts two under vehicle and smaller one on front of chassis rails. **Note:** For extra cab: two ½ x 1 ½ bolts on 300mm wire (supplied) will need to be inserted into driver's side chassis rail. Fold wire into chassis rail to force bolt into hole for ease of fitment. Two ½ nuts (supplied) will be used for fitment in this case. **See figure 7.**
12. Align mounts to centre of vehicle, using inner measurement on alloy protection bar to outer measurement on steel mounting brackets.
13. **Tighten all bolts.**
14. Splice ECB indicator / park light wiring into original wiring loome.



**WORLD'S BEST  
ALLOY BULLBARS**

**East Coast Bullbars (ECB Pty Ltd)**

Tel: 07 3897 5700

Fax: 07 3283 1168

ecb@ecb.com.au www.ecb.com.au

29 Snook St  
Clontarf QLD 4019  
Australia

Po Box 122  
Margate QLD 4019  
Australia

15. Fit ECB LED indicator / park lights (supplied) into protection bar as per instructions supplied with the LED indicator kit. **NOTE: Ensure park light is to outside. See figure 8.**
16. Attach 6mm clip lock trim (supplied) to top of ECB protection bar. **NOTE:** Trim off lower edge on an angle so trim will sit flush with end of protection bar. **See figures 9, 10 and 11.**
17. Attach 3mm clip lock (supplied to underside of bumper trim on sides of vehicle. **NOTE:** Trim off lower edge on an angle so trim will sit flush with both ends of plastic bumper cut area. **See figure 12.**
18. Fit ECB protection bar to outside of steel mounting brackets. Use ½ x 1 ½ bolts, flat washers, spring washers and nuts (supplied). **Finger tighten only. Note:** Front ½ slots in mount for Extra cab, rear ½ slots for all other models.
19. Align ECB protection bar with vehicle allowing minimum 12mm between bar wings and bumper cut for body twist. **Tighten all bolts. See figures 13 and 14.**
20. Fit ECB bash plate to front of engine cover using original bolts, flat washers and M6 nyloc nuts.(supplied)
21. Fit ECB alloy bash plates to inside of ECB steel mounting brackets using two ½ x 1 ½ bolts, flat washers, spring washers and nuts.(supplied)(per side). **Tighten all bolts. See figure 15.**
22. Connect indicator /park lights. Check for correct operation.
23. Trim inner guards to suit Protection bar shape.

#### **ENSURE NUMBER PLATE IS CLEARLY VISABLE**

**Note:** When fitting/refitting the licence plate to the vehicle, ensure there is no obstruction to licence plate vision in accordance with local authorities. If required relocate licence plate to an alternate location.

#### **Further VFPS Notes:**

- a) Do not attach VFPS to the vehicle using anchorages not intended for this purpose (e.g. engine mounting bolts).
- b) Do not use this product for any vehicle make or model, other than those specified by the VFPS manufacturer.
- c) Do not remove the plaque or label from the VFPS.
- d) Do not modify the structure of the VFPS in any way.
- e) No accessory or fitment should project forward of the VFPS forward profile.
- f) **ENSURE THESE INSTRUCTIONS ARE LEFT WITH VEHICLE OWNER AND/OR OPERATOR.**

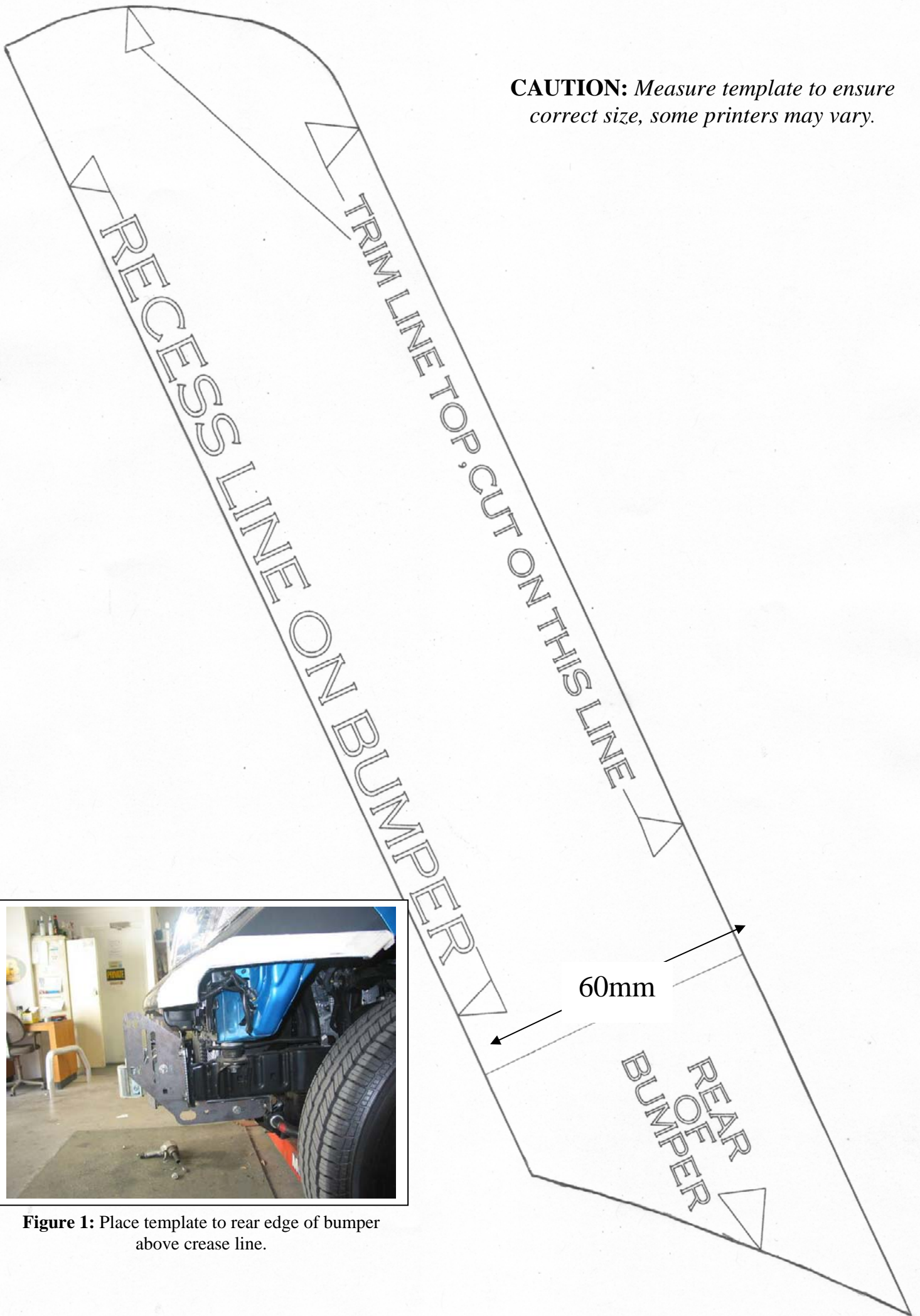
#### **IMPORTANT INFORMATION**

Periodically check bolts and nuts for correct tightness, especially if travelling on rough roads.

#### **FITTING KIT**

1 – Pair ECB Steel mounting brackets	10 – ½ nuts
1 – ECB under body bash plate	8 – M12 x 1.25 x 40 bolts
4 – 40 x 40 steel washer 13mm hole	2 – M6 flat washers
2 – 30 x 30 steel washer 13mm hole	2 – M6 nyloc nuts
2 – ½ x 1 ½ bolts and washers on 300mm wire	1 – ECB LED Indicator / Park light kit
8 – ½ x 1 ½ bolts	6 – Cable locks
26 – ½ flat washers	1 – 2400mm length 6mm clip lock trim
18 – ½ spring washers	2 – 500mm lengths 3mm clip lock trim

**CAUTION:** Measure template to ensure correct size, some printers may vary.



**Figure 1:** Place template to rear edge of bumper above crease line.



**WORLD'S BEST  
ALLOY BULLBARS**

**East Coast Bullbars (ECB Pty Ltd)**

Tel: 07 3897 5700

Fax: 07 3283 1168

[ecb@ecb.com.au](mailto:ecb@ecb.com.au) [www.ecb.com.au](http://www.ecb.com.au)

29 Snook St  
Clontarf QLD 4019  
Australia

Po Box 122  
Margate QLD 4019  
Australia



**WORLD'S BEST  
ALLOY BULLBARS**

**East Coast Bullbars (ECB Pty Ltd)**

Tel: 07 3897 5700

Fax: 07 3283 1168

ecb@ecb.com.au www.ecb.com.au

29 Snook St  
Clontarf QLD 4019  
Australia

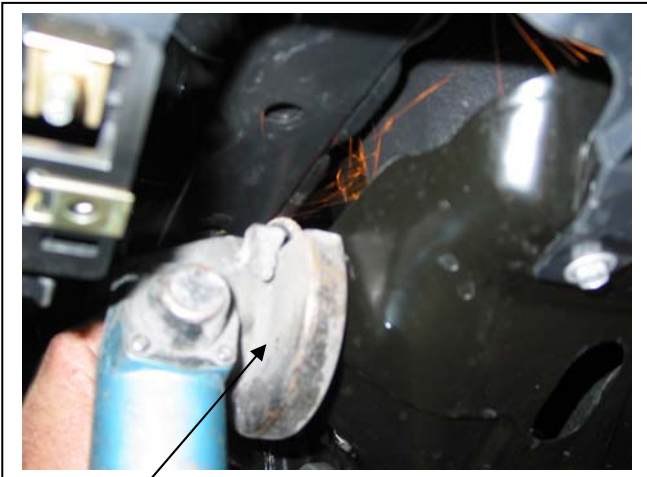
Po Box 122  
Margate QLD 4019  
Australia



**Figure 2:** Use a jigsaw to cut the marked side of the bumper cover.

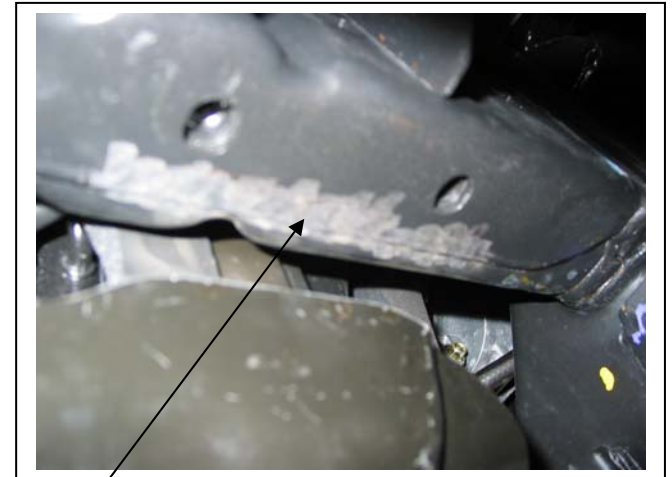


**Figure 3:** Use a sharp knife to cut front of bumper along crease line.



Air grinder

**Figure 4**

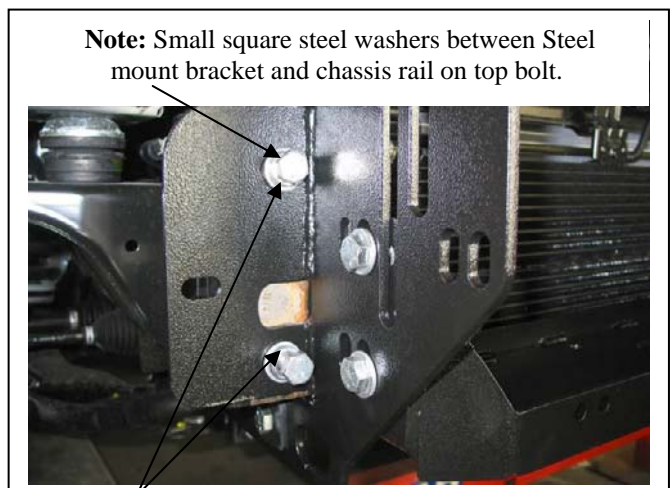


Chassis lip  
ground flush

**Figure 5**



**Figure 6:** Note placement of 40 x 40 steel washers. Winch bracket shown in place.



**Note:** Small square steel washers between Steel mount bracket and chassis rail on top bolt.

**Figure 7:** Bolts in chassis rail in top and bottom to suit duel cab. Extra cab sits side to side



**WORLD'S BEST  
ALLOY BULLBARS**

**East Coast Bullbars (ECB Pty Ltd)**

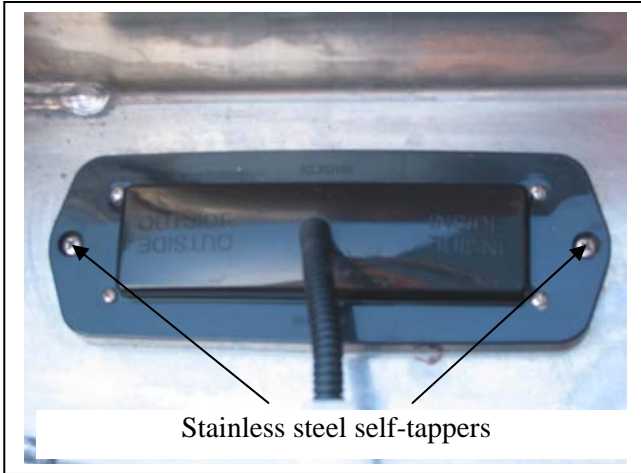
Tel: 07 3897 5700

Fax: 07 3283 1168

ecb@ecb.com.au www.ecb.com.au

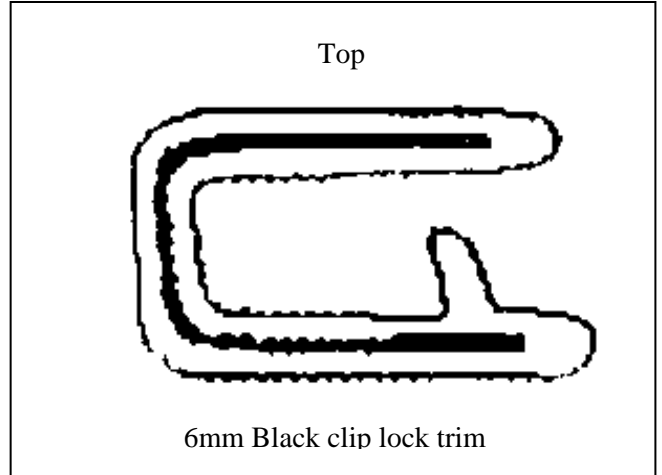
29 Snook St  
Clontarf QLD 4019  
Australia

Po Box 122  
Margate QLD 4019  
Australia



Stainless steel self-tappers

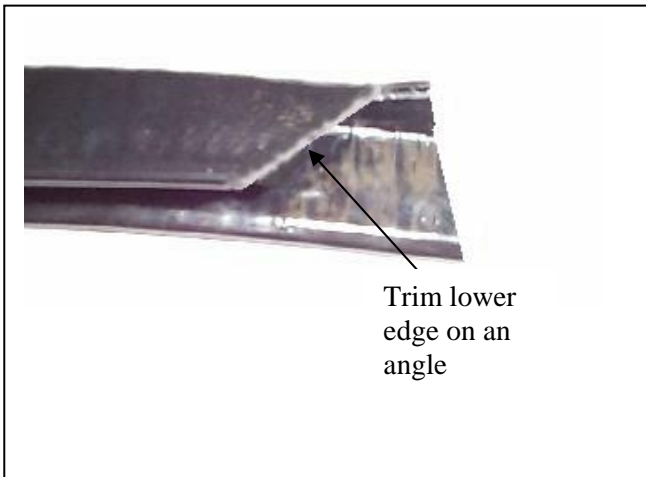
**Figure 8**



Top

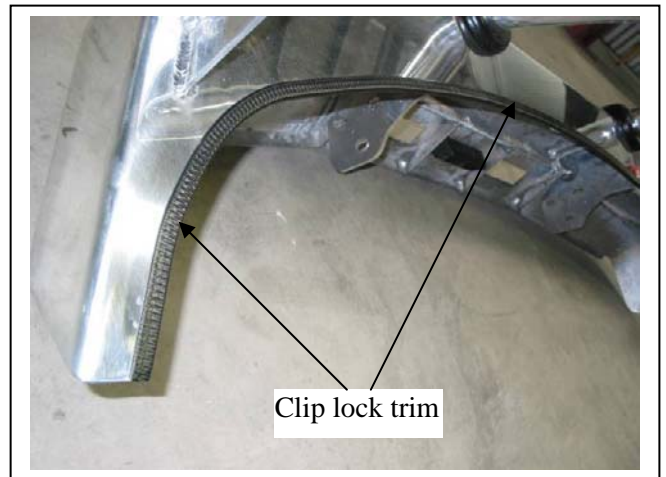
6mm Black clip lock trim

**Figure 9**



Trim lower  
edge on an  
angle

**Figure 10**



Clip lock trim

**Figure 11**



**Figure 12:** 3mm clip lock trim on outer cut edge of plastic bumper.



**Figure 13:** Front view



**WORLD'S BEST  
ALLOY BULLBARS**

**East Coast Bullbars (ECB Pty Ltd)**

Tel: 07 3897 5700

Fax: 07 3283 1168

ecb@ecb.com.au www.ecb.com.au

29 Snook St  
Clontarf QLD 4019  
Australia

Po Box 122  
Margate QLD 4019  
Australia



**Figure 14:** Side view



**Figure 15:** Under body guard attached to Alloy tray.



**WORLD'S BEST  
ALLOY BULLBARS**

**East Coast Bullbars (ECB Pty Ltd)**

Tel: 07 3897 5700

Fax: 07 3283 1168

ecb@ecb.com.au www.ecb.com.au

29 Snook St  
Clontarf QLD 4019  
Australia

Po Box 122  
Margate QLD 4019  
Australia

**We value your comments**

Dear Fitter,

ECB would like to know how you went with the installation of this product. We value your comment and may need to contact you to clarify some details so please complete your contact details clearly.

We would appreciate if you could complete as many of the following details as possible.

<b>Your Name:</b>	<b>Your contact No.</b>
<b>Product Part No.</b>	<b>Product Invoice No.</b>
<b>Product Description:</b>	<b>Make, model, and year of vehicle:</b>
<b>Product Work Order No.</b>	<b>Company your from/Company product purchased from:</b>

**Date of Fitment:** \_\_\_\_/\_\_\_\_/\_\_\_\_

Was the fitting hardware supplied complete?

Yes

No

If no what was not supplied

---

---

Did the installation go well?

Yes

No

Please provide comments

---

---

---

Please draw diagrams if you need to.

**Post to**  
Reply Paid 122  
PO Box 122  
Margate QLD 4019

**Fax to**  
(07) 3283 1168





WORLD'S BEST  
ALLOY BULLBARS

East Coast Bullbars (ECB Pty Ltd)

Tel: 07 3897 5700

Fax: 07 3283 1168

ecb@ecb.com.au www.ecb.com.au

29 Snook St  
Clontarf QLD 4019  
Australia

Po Box 122  
Margate QLD 4019  
Australia

# DESPATCH CHECKLIST EAN62SY

ICZBKCN62

\* I CZBKCN62\*

Work Order #	
Finish:	
Transport:	
Due Date:	

- 1 – Pair steel mounting brackets. **Caution: Front mount plates are sided**
- 1 – Bent alloy bash plate. Powder coated black.
- 1 – Bolt Kit
- 1 – ECB LED Indicator / Park light kit.
- 1 – 2400mm length 6mm clip lock trim
- 1 – 500mm length 3mm clip lock trim
- 2 – ECB Overriders – **Fitted to Bar**
- 6 – 6mm Air Scoops – **Fitted to Bar**

**See other side of  
this page for  
photos of all  
mounts**



Is this product “the best it can be” Yes \_\_\_\_\_/\_\_\_\_\_

Wrapper's initials / Checker initials

If **NO** fix before continuing

All parts checked and completed by:

Nut and bolts: \_\_\_\_\_ Date \_\_/\_\_/\_\_

Order control: \_\_\_\_\_ Date \_\_/\_\_/\_\_

Final wrap check: \_\_\_\_\_ Date \_\_/\_\_/\_\_



**WORLD'S BEST  
ALLOY BULLBARS**

**East Coast Bullbars (ECB Pty Ltd)**

Tel: 07 3897 5700

Fax: 07 3283 1168

ecb@ecb.com.au www.ecb.com.au

29 Snook St  
Clontarf QLD 4019  
Australia

Po Box 122  
Margate QLD 4019  
Australia

